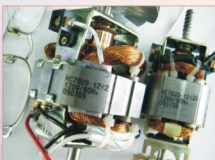


# AuJet HC-1800D

## High Resolution Ink-Jet Printer

You can edit pictures and texts as you wish. What you preview will be printed exactly as it is.  
The control system and inking system are independent and there are various colors available for choice.  
One printer can do jobs of two printers. One as Two!  
Lines of printing are not limited.  
Applicable in metal, plastic, aluminum film, wood, carton ect.

- Multi-function
- Easy Operation
- No Solvent
- Economical



Electromechanical products



Small transformer



Energy-saving bulb



Packaging bags

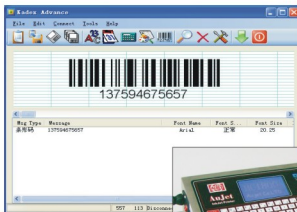


The appearance of AuJet HC-1800D ink-jet printer sets a brandnew milestone in the ink-jet printer industry. And this printer enables its users easily print any needed contents on the production line. In addition to the high-solution print result, the stable performance quality also leads to the lower operating cost, which exceeds customer's expectation and keep customers satisfied. And besides these benefits, there are more...

## ❖ Feature

1. It's connected with computer through USB which ensures the fast and stable transmission.
2. This printer adopts matching software Kadex based on Windows operating system, which is stable and easy to operate. It has a very powerful function of editing.
3. The user can either use the matching software to make complicated picture or freely transfer and print any picture in BMP format designed by other application software.
4. The user can use all the fonts available in his/her own computer because the matching software is also installed in the personal computer. And the user can increase the character library if necessary thanks to the easy expanding feature of this product.
5. This printer can print the real-time information such as current time, production date, 39 codes, EAN 13 codes or other standard UPC or coding printing ( such as product serial number)
6. The user can use the matching software to adjust the printing position precisely to meet the requirements of production line.
7. Simple and easy operation. There is a special software to demonstrate the operation and the video teaching makes learning easy to understand.
8. The design for this printer is user friendly with status indicator lamp to display the printing status.

## ❖ Real-Time Printing



## ❖ Technical Data

1. Operating system: Windows98/WindowsMe/WindowsXP
2. Editing software: Special computer typesetting software Kadex. Powerful function with video teaching
3. Software function: Can easily edit picture and texts. What you preview will be printed exactly as it is.
4. Screen display: Display all printing parameters on the screen. Clear information!
5. Print Resolution dpi: 200 DPI
6. Status display: Red light ( Sensor is working); Green light (Encoder is working). White light ( Computer connection is working)
7. Printing fonts: High-definition printing font (Print Font). Can also print dot matrix
8. Print pictures: It can print various trademarks, logos, Chinese or English fonts, numbers, characters and special signs.
9. Lines of printing: The user can edit the quantity of lines within the valid height ( 18mm).
10. Print UPC: ITF/CODE39/JAN/EAN128/QR, Code128、 EAN13
11. Height of Character: Can choose the character height based on Print height range 1mm~18mm
12. Message Memory: Limitless memory space for messages
13. Message Length: Max. 250 serial numbers per message. 1-9 variable sequential numbers; Maximum 35 meters /minute. Speed isn't influenced when adding lines.
14. Colors of Ink Cartridges: Black, Red, White
15. Print Direction: Forward, reverse, vertical downward or vertical upward.
16. Print material: Metal, plastic, wood, aluminum film, carton or building material surface ect.
17. Applicable products: Display screen of mobile phone, drink lids, food package bags, medicine package, steel-plastic door & window, aluminum alloy, battery, plastic tube, steel plate, PCB, chip, woven bag, egg, brake, housing for mobile phone, carton etc
18. Ink Cartridge: Solvant based environmentally friendly ink cartridge, oil based ink cartridge. No need to use gas source or dilution
20. Printer Dimension: Control system 34.7x22.4x 11.5cm & inking system: 25.5x18.56x 7cm
21. Rated Power: AC 220V
22. Energy Consumption: Average lower than 100W
23. Weight of machine: About 10 KGS
24. Operation Temperature: 15 - 32°C ; 40% - 70% Humidity

### ➤ Remark:

The manufacturer reserves its right to update the parameters and enhance product performance without prior notice.

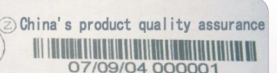
## ❖ Printing sample of ink-jet printing

Not connecting jet printing sample database

Production dates:07/09/30  
Best use:09/09/30  
Product batches:20070930  
Water numbers:00000001

## High Resolution Ink-Jet Printer

The jet printing sample database connection



## Dealer